

COMPANY PROFILE

BIJON ENGINEERING

YOUR PERFECT
PARTNER IN ENGINEERING

WWW.BIJONENGINEERING.COM



Company Overview

Introduction

We, Bijon Engineering are a highly dependable platform for all kinds of Design & Engineering solutions, high-end in technical, competitive in pricing, fastest delivery, maintaining high quality in deliverables, hasslefree solutions to its customers, and led by highly experienced personnel who worked in the industry for many years.



ABOUT US

Bijon Engineering is a leading provider of specialized engineering services for the oil, gas, petrochemical, power & energy, and water industries. We, Engineering offers comprehensive, end-to-end project support, covering the entire lifecycle from concept development to final execution. With our multi-disciplinary team of experts in engineering, design, procurement, and safety, we seamlessly integrate diverse project aspects to provide holistic solutions. Compliance with industry regulations and safety standards is paramount to us, ensuring adherence to codes and prioritizing the safety of personnel, assets, and the environment. From feasibility studies and engineering design to procurement management and construction oversight, we deliver a seamless and hassle-free experience for our clients



Our Company

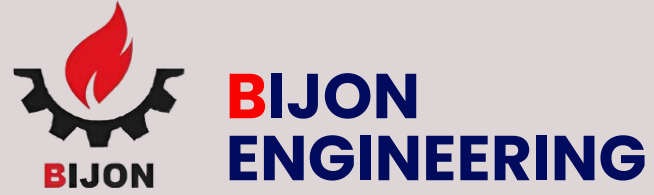
Director Message

"I'm Jo Jovilla, an experienced professional with 30 years of international experience in the Oil & Gas industry. I've worked in various roles such as Project Engineer, Proposals Manager, Operations Manager, and Project Manager for well-known EPC Contractors and fabricators. My expertise lies in engineering and fabricating Process Skid Mounted Packages, which include electrical, instrumentation, fire & gas, and control systems. I have successfully completed projects for renowned companies like Saudi Aramco, Shell Petroleum, Adnoc, OXY and BP. With a diploma in Electrical Engineering and extensive certification and training, I bring a strong knowledge foundation to the table."



JO JOVILLA
Director





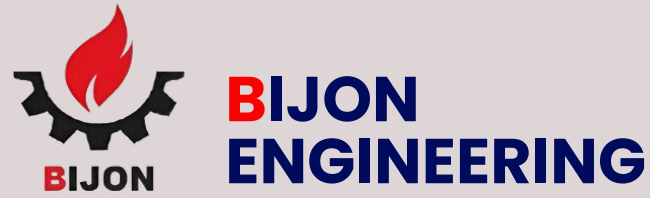
Our Company

QUALITY



COMMITMENT

Qualified/ trained engineers/draftsmen will execute works as per applicable international standards and industry practice by using standard design/drafting software as required. We, Bijon committed to developing, producing, and delivering products and services which consistently conform to customer requirements and ensure our continuous improvement to provide the best technocommercial design to our customers in line with the client's input



Our Company

Company Value

Integrity guides our actions. Excellence is our standard. Innovation fuels our solutions. Collaboration drives our success. Together, we empower industries, ensuring sustainable growth in the oil, gas, petrochemical, energy, and water sectors

Our Vision

01

Powering industries with expert engineering services and technical consultancy for oil, gas, petrochemical, energy, and water sectors. Maximizing potential, improving efficiency, and providing long-term solutions for an improved future.

Our Mission

02

Driving excellence and innovation in engineering services and technical consultancy for the oil, gas, petrochemical, energy, and water industry



PROCESS SKID MOUNTED PACKAGES:

We offer comprehensive design and engineering solutions for various process skid-mounted packages, including PWT Skids, Chemical Injection Skids, Test/Production Separators, Wellhead Manifold Skids, Fiscal Gas/Oil Metering Skids, Modular Packages, EPF Packages, Fuel Gas Skids, MEG/TEG Packages, and more. Our services are tailored to upstream, midstream, and downstream projects, providing optimized and cost-effective designs. From the initial process data, we ensure efficient and technically sound solutions for your skid-mounted packages.

OUR SERVICES



Key Deliverables are:-

- Detailed P&ID.
- 3D model and General Arrangement Drawing.
- Piping design and stress analysis report.
- Piping sizing verification, hydraulic analysis, surge analysis, etc.
- Structural design and stress analysis (inplace & lifting) report.
- Mechanical design and calculation of pressure vessel/ tank etc.
- Foundation Loading Data and Anchor Bolt details.
- Lifting drawing and designing drawings of the spreader bar, sling, shackles, etc.
- Fabrication drawings (piping, structural, vessel, tank etc.)
- Transportation analysis report.
- Electrical, Instrumentation & control system drawings/ documents etc.



**BIJON
ENGINEERING**



OUR SERVICES



STATIC EQUIPMENT:

Design and detailing of all types of static equipment as follows;-

- Pressure Vessels ASME Sec VIII Div-1 and 2, EN 13445.
- Tall process columns, Reactors, Drums, Clad Vessel, Spheres, Earth mounted bullets and Transportation tankers.
- Small/ medium volume storage tanks such as Stiffened dome / umbrella roof, Column supported cone roof, Stiffened cone roof, Internal Floating Roof (IFR) & External Floating Roof (EFR) - single & double deck, Sulphur tank, Elevated tanks per AWWA D100, Large Rectangular tanks as per UL58, Above ground tanks storing flammable liquids per UL142.
- Heat Exchangers: Thermal rating and mechanical design of all types of Heat Exchangers including floating head type.
- Silos, Bins, Hoppers etc

Key Deliverables are:-

- 3D model & General arrangement drawings.
- Mechanical design calculation, report and GA drawing.
- Fabrication drawings.
- Assembly and part drawings.
- Analysis report (as required)
- Bill of materials



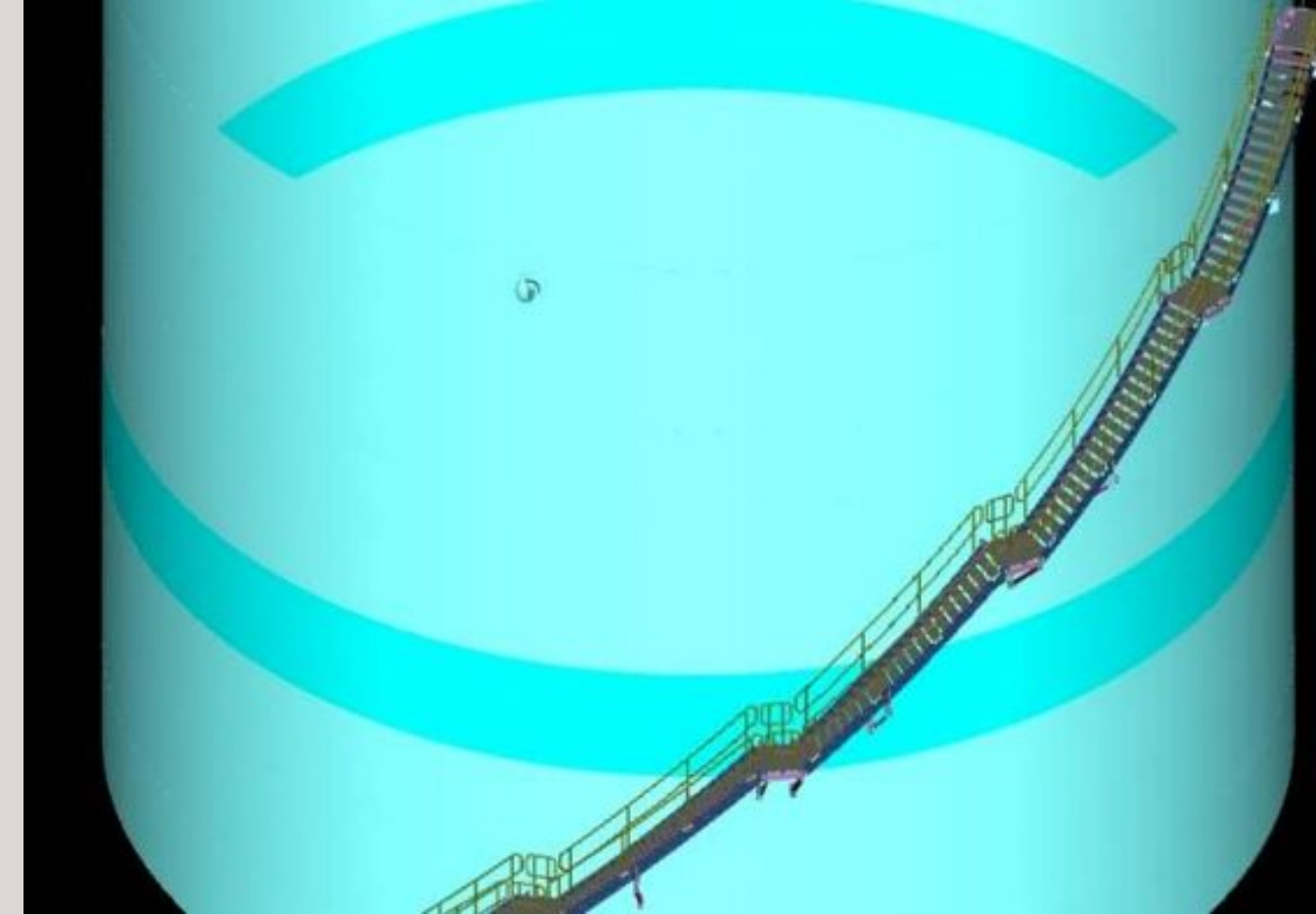


OUR SERVICES

STORAGE TANK:

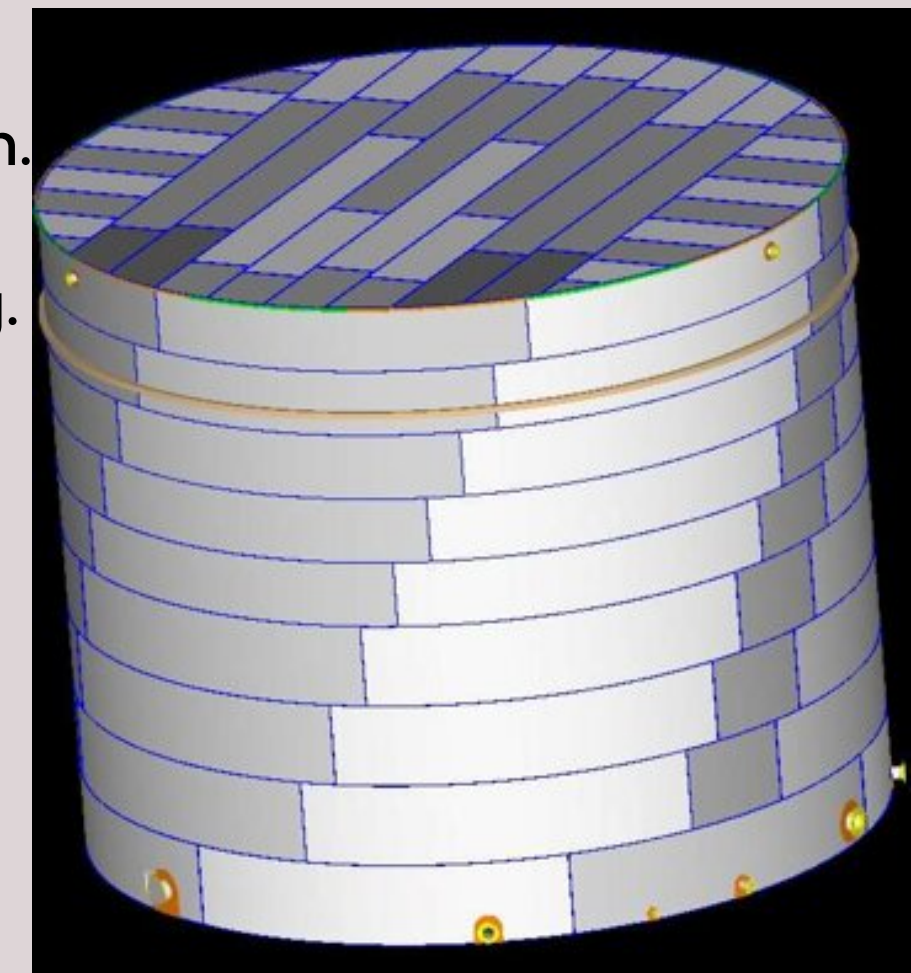
Design and detailing of all types of shop fabricated/ site erected storage tank as per API620 & 650.

- Tank software for design and Staad Pro for roof structure.
- Static & dynamic design against wind load and seismic.



Key Deliverables are:-

- Mechanical Design Calculation.
- Thickness Calculation.
- General Arrangement Drawing.
- Erection & Part Drawing.
- Fabrication drawings
- Bill of materials





**BIJON
ENGINEERING**

OUR SERVICES



PIPING:



Design and detailing of all type of metallic/ GRP piping and its related works as follows;-

- Piping routing and design (against P&ID, plot plan, layout etc).
- Piping stress analysis
- Piping surge Analysis
- Piping Thickness calculation.
- Pressure drop calculation.
- Hydraulic Calculation
- Piping modelling
- Pipe support design

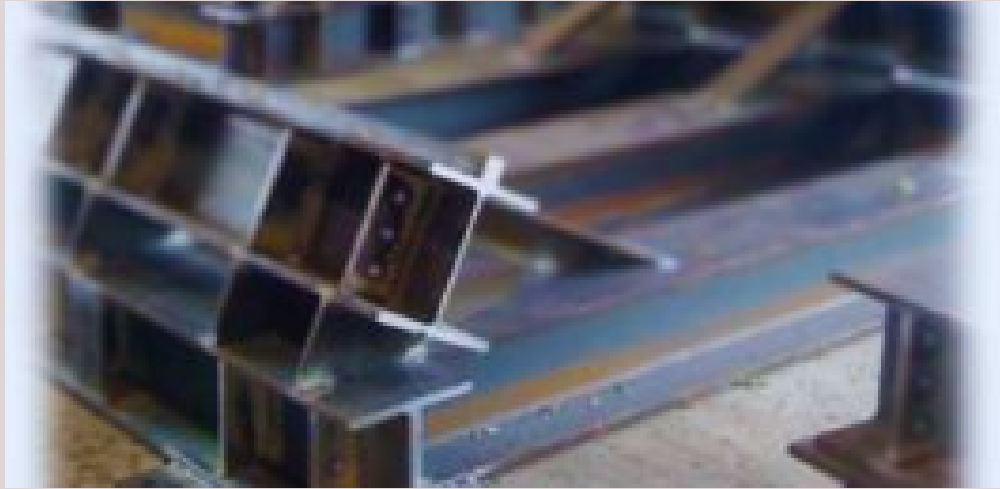


Key Deliverables are:-

- Stress Analysis Report.
- Piping Layout/ GAD.
- Piping isometrics.
- Pipe support detail and drawings
- Bill of materials



OUR SERVICES



STRUCTURAL:

Design and detailing of all types of structural rolled sections/ PEB structural buildings/ bin/ hoppers/ silos/ Towers/ Platforms/ Ladder/ Handrails and its related works as follows;-

- Structural Staad design and modeling.
- Structural stress analysis (in-place & Lifting)
- PEB structural building design and detailing.
- Tekla modeling and detailing.
- Foundation loading and design.
- Design and detailing of secondary steel (handrail, ladder, stair etc.).



Key Deliverables are:-

- Stress Analysis Report.
- Model/ GAD.
- Foundation loading data and anchor details.
- Fabrication drawings
- Erection and Part Drawings
- Bill of materials



OUR SERVICES

ELECTRICAL, INSTRUMENTATION AND CONTROL SYSTEM

Design and engineering of electrical equipment, MCC, LCP, Switch boards, pump control panel, Field instruments, Valves, MOVs, pumps & motors, PLC/RTU control panels etc.



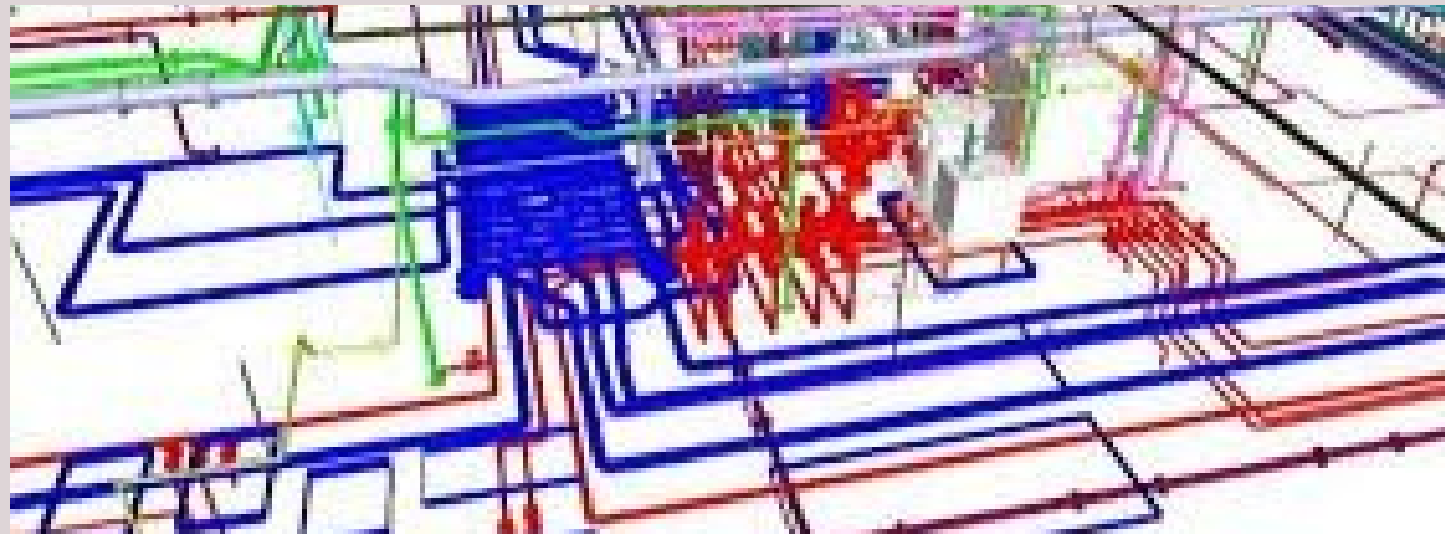
Key Deliverables are:-

- Data sheets of Valves, field Instruments, pumps, motor etc.
- Pneumatic, process and electrical Hook Up Drawings.
- Termination diagram/JB drawings.
- Instrument Loop diagram.
- Cause & effect diagram.
- Operation philosophy.
- Shutdown and alarm list.
- Control philosophy and I/O list.
- Control schematic diagram.
- Fire & Gas drawings.
- Single line diagram.
- Cable schedule.
- Heat load calculation.
- Lighting calculation.
- Wiring diagram.
- Equipment drawings.
- Material take-off.
- Equipment detailing, routing, GA drawings, tray layout etc.
- Earthing diagram.
- MCT drawings.

OUR SERVICES

BUILDING INFORMATION MODELLING (BIM)

Bijon offers comprehensive BIM solutions for building architecture, HVAC, MEP, and more. We specialize in providing tailored services for buildings, switch rooms, substations, pump rooms, and office rooms. Enhance your design accuracy and streamline construction processes with our advanced BIM solutions.



Key Deliverables are:-

- 3D Model
- Civil/ architectural drawings.
- Electrical drawings.
- Mechanical/ Piping/ Plumbing drawings
- HVAC and associated ducting drawings.
- All the construction drawings.



OUR SERVICES



PLANT:

Design and detailing of the plant using smart plant technology services.



INFRA PROJECTS:

Design and engineering of mechanical, piping, structural, electrical, instrumentation, control system, Fire & Gas, PA system, CCTV system etc. for all types of infra/ utility projects such as water treatment plants, RO plants, pumping stations, pipeline, power station, etc.



REFURBISHMENT PROJECTS

Review, study, detailing, and re-generation of construction drawings for the refurbishment of equipment, plant, accommodation modules, skid packages etc.

OUR SERVICES



SOLAR SKIDS/ PROJECTS

Design and detailing of solar skids/
projects for small, medium and large
power generation applications.



INSPECTION, TESTING, AND CERTIFICATION

Performing quality control inspections,
testing equipment, and providing
certification services to ensure compliance
with industry standards and regulations.



CONTAINER CONVERSION:

Design and detailing of standard 20' and
40' containers converting as modular
switch room, control room, VFD room,
accommodation module etc.

SOFTWARES WE USE

STAAD.Pro

AVEVA

PDMS

eDesign Suite

Carrier

SmartPlant® 3D

INTERGRAPH

**AUTODESK
REVIT**

HAP
HOURLY ANALYSIS PROGRAM

PPM

PV Elite®
Vessel Analysis

CADWorx®
Plant Design Suite



AUTOCAD

**AUTODESK®
NAVISWORKS®**

Adobe

PIPENET™
LEADING THE WAY IN FLUID FLOW ANALYSIS

Tekla®

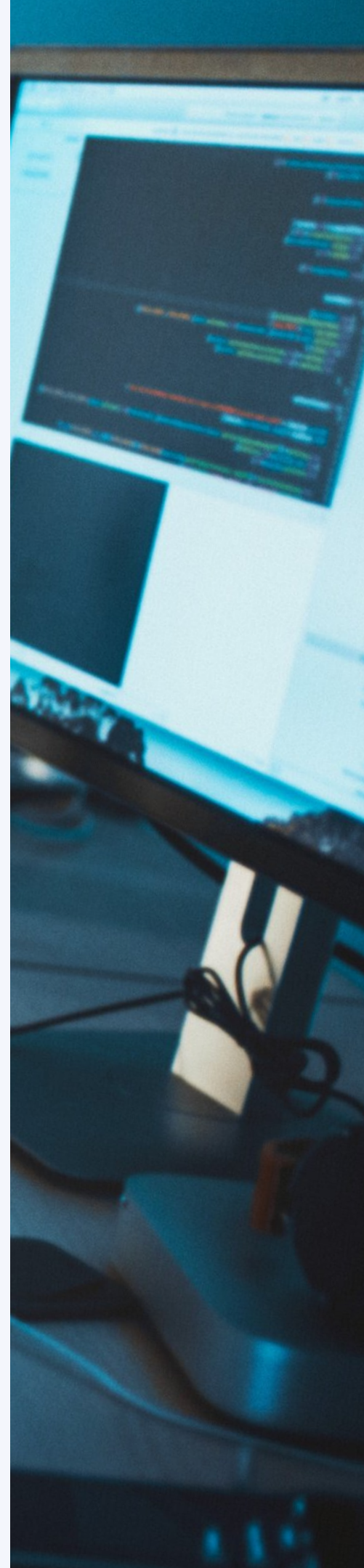
Ansys

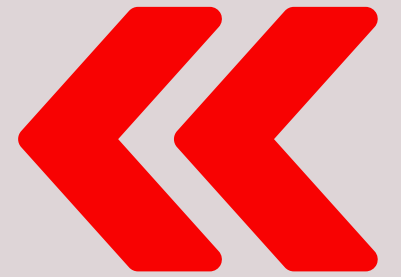


TANK®

Design, Analysis & Evaluation of Storage

CAESAR II®
Pipe Stress Analysis





CONTACT US

In India & Middle East

Jo Jovilla, Director



+91 6238054709, +91 9400765500



jo.jovilla@bijonengineering.com

In Canada

Nikhil Jovilla



+1 4162306569



nikhil.jovilla@bijonengineering.com

